

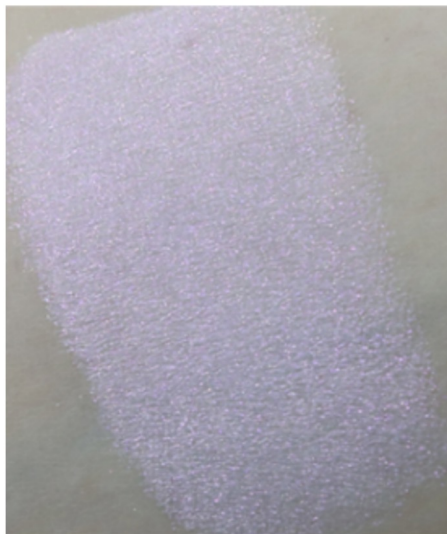
Kuncai Pigmente
inspiriert durch
Barbie

simply
good.

11 COSMI 815-R2 SUPER BRIGHT RED



A Cheerful Translucent Candy Red



COSMI 815-R2



AURORA
Synthetic Mica

12 COSMI 815-R2 SUPER BRIGHT RED



A Cheerful Translucent Candy Red



COSMI 815-R2



Romantic Charm and Joie de Vivre

- This bright **sunny pink tone** with its brilliant gleam just radiates high spirits
- Discover this **youthful candy color** with a light shimmering raspberry flavor
- Convey **softness and femininity** in a huge variety of cosmetic products
- PSD: 8-35 μm



Image: chanel.com



Image: de.shein.com





ILLUMINATED BY THE SUNSET

Aurora Twilight Rose
romantic and multifaceted



Inspirational and Provocative AURORA TWILIGHT ROSE

Product Information



This pigment offers luminous color with red and purple nuances that are enhanced by an exceptional chroma and extremely high color saturation. In Twilight Rose, passion meets beauty – an ideal combination for cosmetic products.



Color depth, brilliant sparkle and good hiding power – all in one pigment without an organic colorant or carmine. That means greater color stability, no bleeding, no fading, and no color migration.



Twilight Rose is based on synthetic mica (fluorophlogopite), which heightens purity of color and delivers exceptional brightness, and reflective power.

AURORA TWILIGHT ROSE

Optical Features	Special Product Features
Intense and pure purplish red body color	Perfect balance of sparkle, color intensity and particle size. Without carmine or organic colorants there is no fading, no staining, no bleeding, and no color migration.
High brilliance and gloss	Romantic shimmering purplish red ideal for eye shadows, lipsticks, and nail polish. Extremely high color stability and temperature resistance.
Exceptional reflectivity	Very smooth and even surface
Enhanced hiding power	Low heavy-metal content
Extensive styling potential	Meets all cosmetics regulations

ORDERING INFORMATION

Product	Color	Package size
COSMI 818V Twilight Rose	Violet pearlescent	samples, 1 kg, 5 kg, 25 kg

PRODUCT INFORMATION

Property	Chemical Name	CAS no.
Composition	Synthetic Fluorophlogopite	12003-38-2
	Titanium Dioxide	13443-67-7
	Iron (III) Oxide	1309-37-1
	Tin Oxide	18282-10-5
Particle size distribution		10-45 µm
pH Value		4.0 -7.0

Fujian Kuncai Material Technology Co. Ltd.,
Haicheng Rd., Yuanhong Investment Zone, Fuzhou
ZIP: 350034, China
T: +86 (0) 4001-603826
Mail: customerservice@kuncai.com
www.kuncai.com

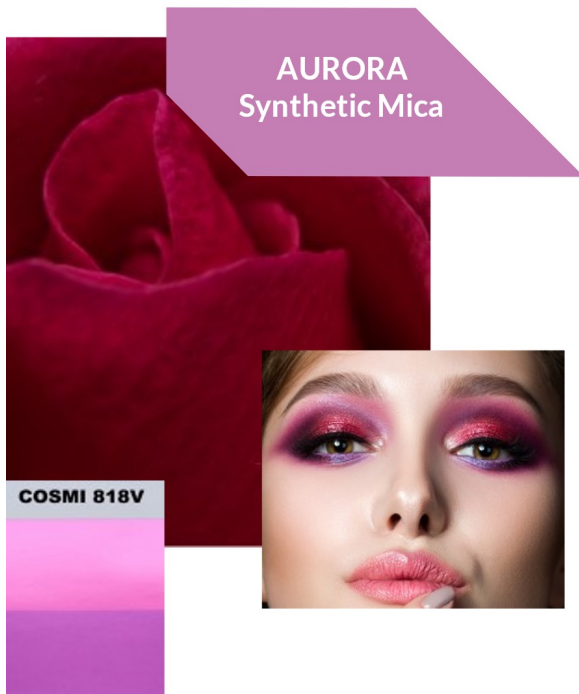
Kuncai Europe B.V.
Linie 506, 7325 DZ Apeldoorn
The Netherlands
T: +31 (0) 55-2300000
Mail: customerservice@kuncaieurope.com
www.kuncai-pigments.com

Kuncai Americas LLC,
130 E. Wilson Bridge Rd Suite 210, Worthington
OH 43085, USA
T: +1 (614) 654-7424
Mail: customerservice@kuncaiusa.com
www.kuncai-pigments.com

Edition 04 | 2021

04 COSMI 818V TWILIGHT ROSE

Entrancing Vibrancy



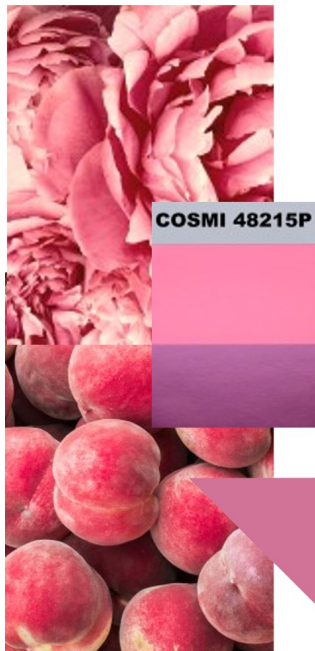
Illuminated by the Sunset

- In Twilight Rose **passion meets beauty** – an ideal combination for eyes, lips and nails
- This is a bewitching, luminous color with romantic shimmering **purplish red and violet nuances**
- Without carmine or organic colorants there is **no fading, no staining** , **no bleeding**, and **no color migration**
- The synthetic mica substrate ensures an **exceptional chroma, high reflectivity** and a very smooth and even surface at the same time
- PSD: 10-45 μm



02 COSMI 48215P INTENSE PINK

Pink Summer Breeze



COSPEARL
Natural Mica

21.03.2022

Cosmetic Highlights 2022

Blooming and Caressing

- Enjoy a **soft natural pink** with an invigorating purple blush
- Intense Pink is a fruity caress of **red peach and pink peony**
- A classic pearlescent pigment combined with **organic red**
- Discover this harmonious exquisite pink which will give **complexions a charming glow**
- PSD: 10-60 μm



Image: youstarcosmetics.com



7 Kontakt

Muster
gewünscht?

